

JOB NAME

RESIDENCE

ALPINE, NJ 07620

TITLE

SUSAN'S BATH

MATERIALS

MAPLE PLYWOOD INTERIORS

POPLAR AND MAPLE SOLID WOOD PANEL AND DOOR FRAMES AND MOLDINGS

MAPLE PLYWOOD AND MOISTURE RESISTANT MEDIUM DENSITY FIBERBOARD (MEDEX) EXTERIORS

FINISHES

PAINTED EXTERIORS. COLOR T.B.D. BY DESIGNER'S SPECS OR SAMPLE

INTERIOR FINISHES T.B.D.

HARDWARE

BLUM CLIP TOP INSET BLIND CORNER HINGES 79T9590B

BLUM TUNDEM PLUS BLUMOTION UNDERMOUNTED DRAWER SLIDES 562H4570B

SPECIAL NOTES

PLEASE NOTE THAT HADLES AND/OR PULLS MUST BE SUPPLIED PRIOR TO FABRICATION TO ASSURE PROPER FIT AND INSTALLATION.

SUBMITTALS

1. 07/17/2009 FOR APPROVAL

2.

3.

4.

DESIGNER

CONTRACTOR

ENGINEERING

FILE

Drawn By

Date

07/17/2009

Job Number

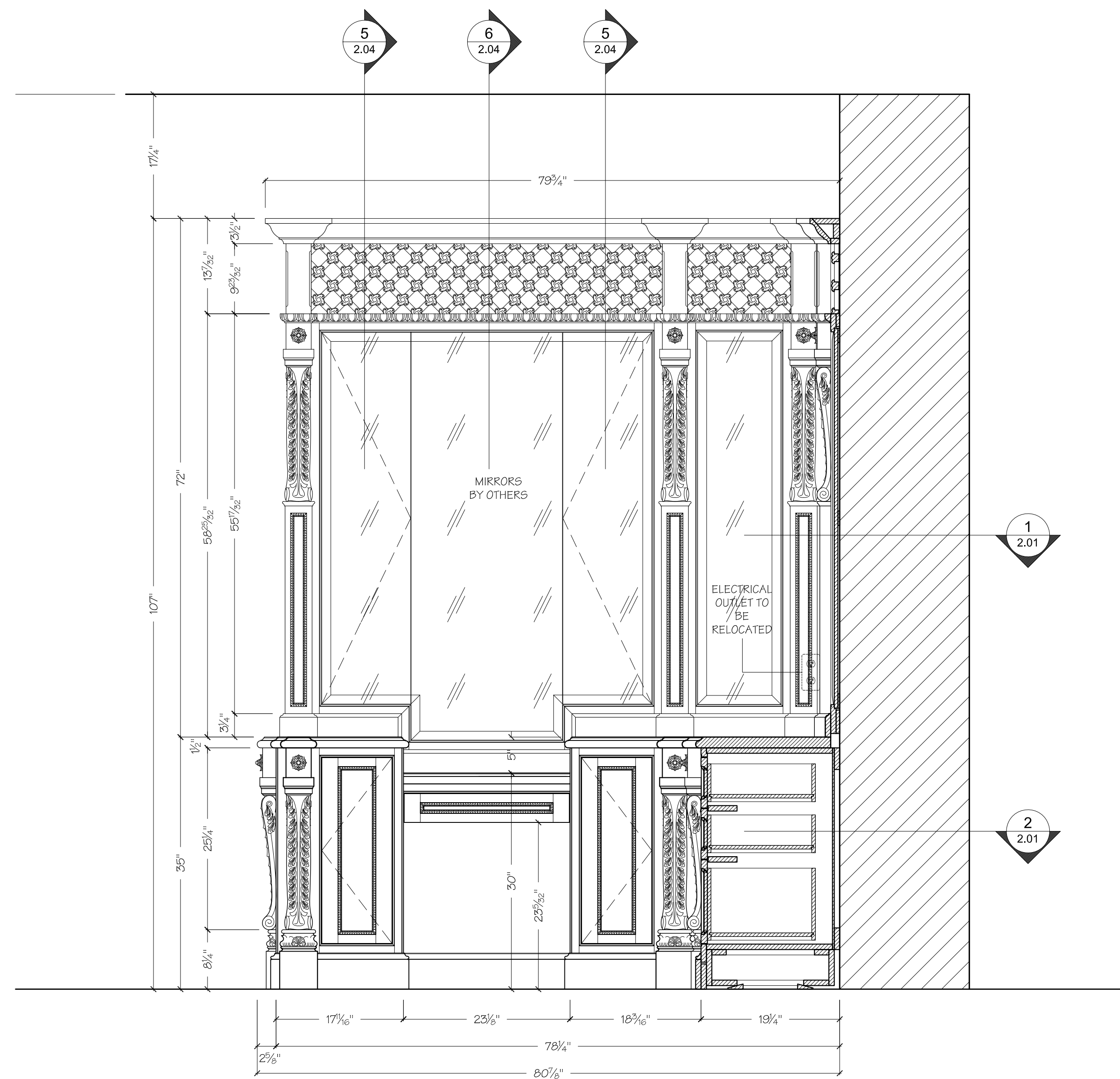
051909-27

Scale

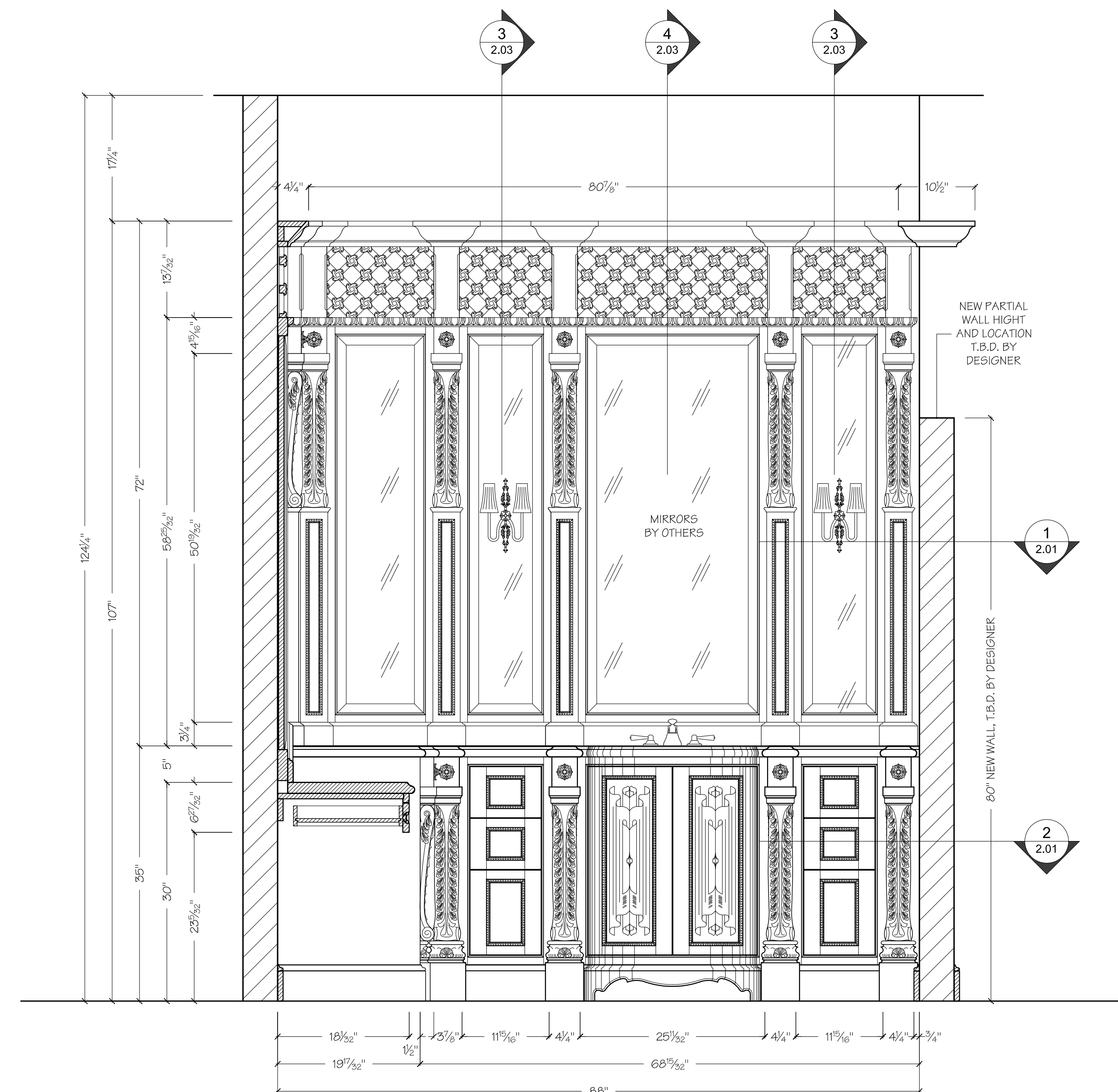
AS NOTED

Page

2.02



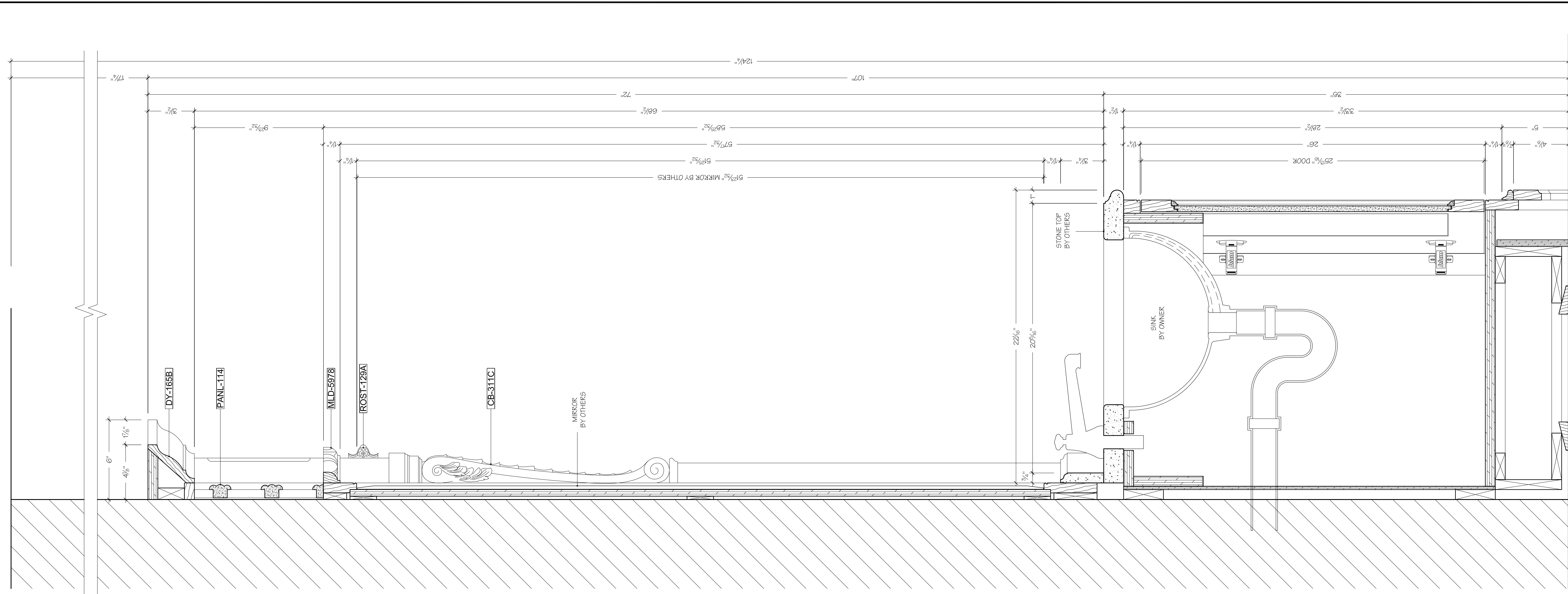
**B ELEVATION**  
SCALE: 1" = 1'-0"  
VANITY UNIT  
SUZAN'S BATH



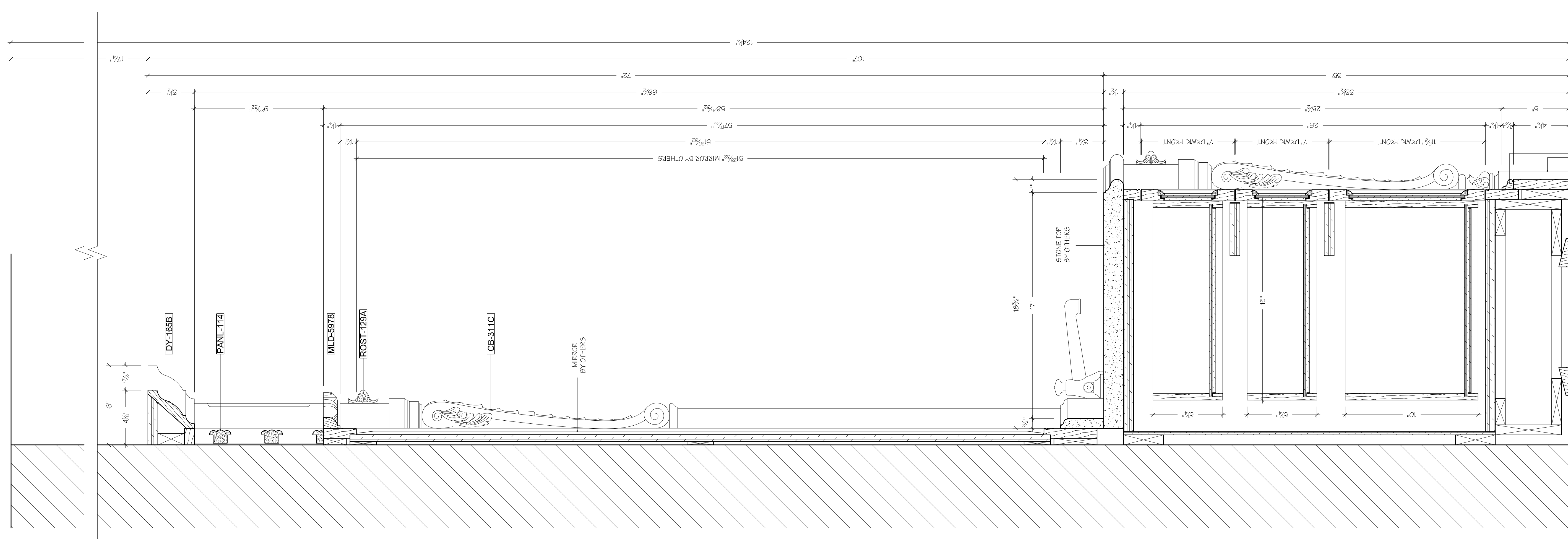
**A ELEVATION**  
SCALE: 1" = 1'-0"  
VANITY UNIT  
SUZAN'S BATH

PAINTGRADE

PLEASE NOTE: ALL DECORATIVE ELEMENTS SHOWN IN THESE DRAWINGS (PEARLWORKS AND WHITE RIVER) ARE DRAWN ACCORDING TO MANUFACTURER'S SPECS AND DIMENSINS MAY VARY AND BE DIFFERENT FROM THOSE REFLECTED HERE. ALL PARTS MUST BE SUPPLIED PRIOR TO MANUFACTURING FOR VERIFICATION AND CONSTRUCTION PURPOSES.

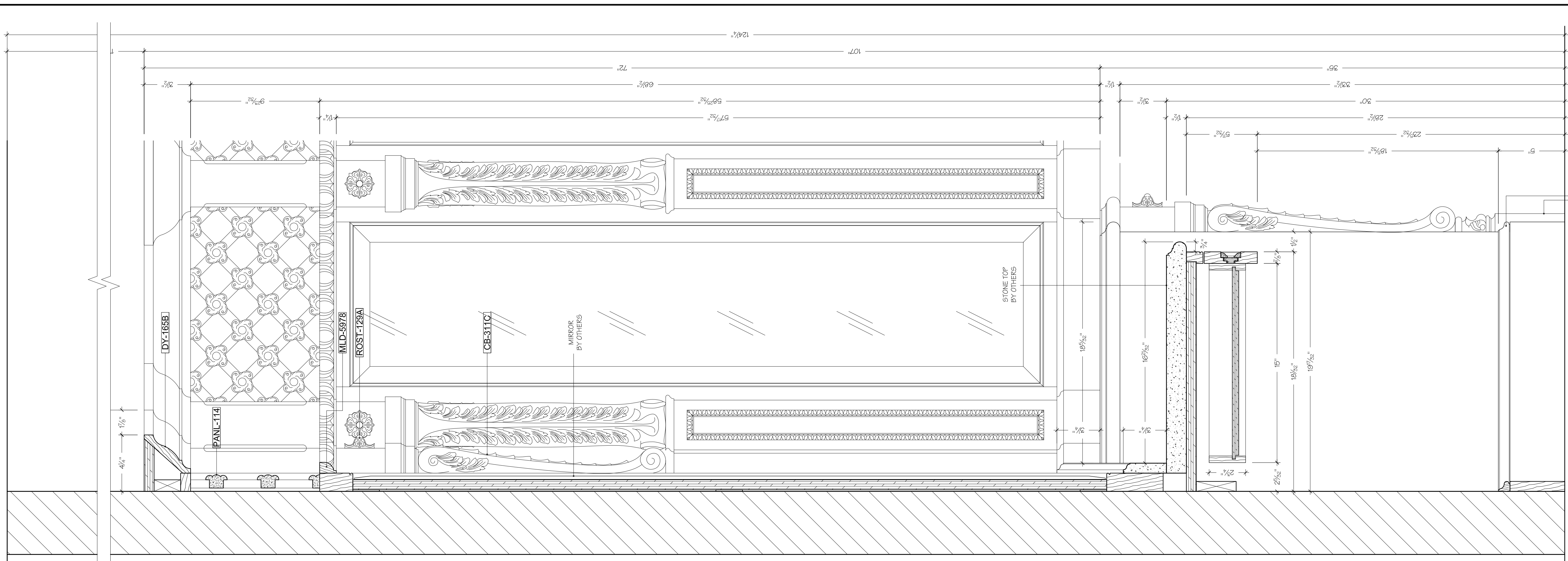


**4 SECTION**  
VANITY CABINET  
SUZAN'S BATH  
SCALE: 3" = 1'-0"

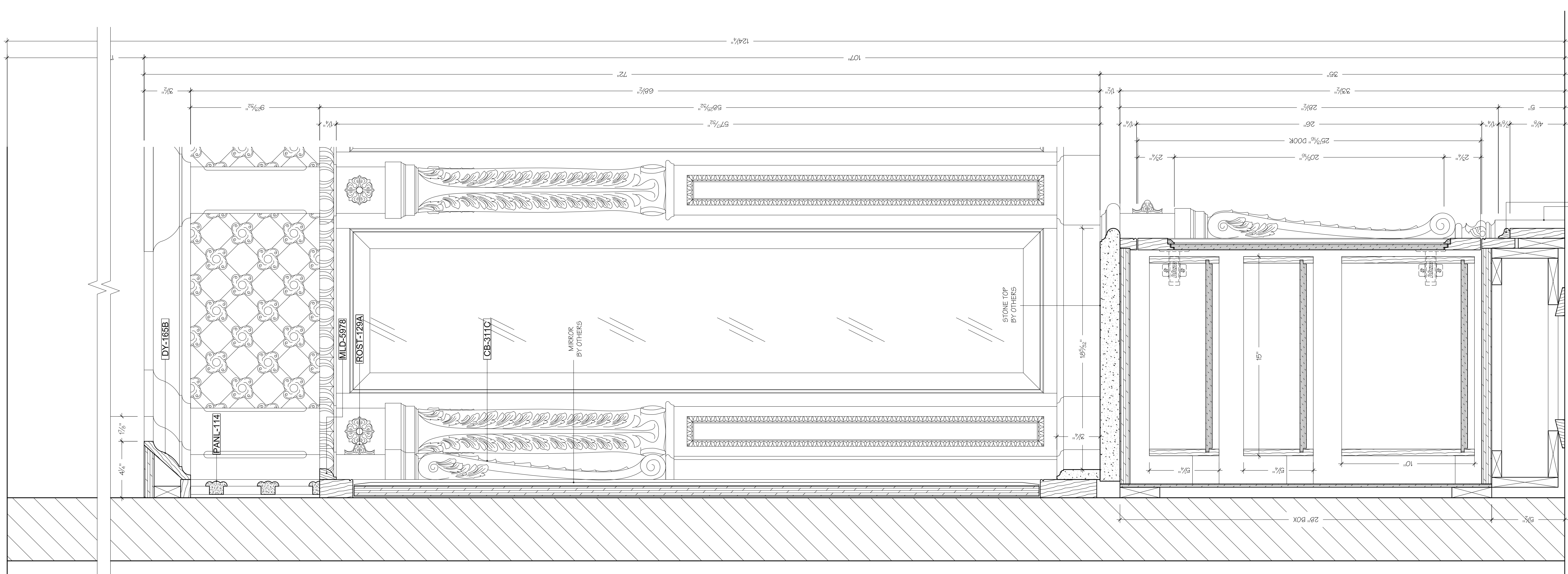


**3 SECTION**  
DRAWER CABINET  
SUZAN'S BATH  
SCALE: 3" = 1'-0"

<b>JOB NAME</b>	
RESIDENCE	
ALPINE, NJ 07620	
<b>TITLE</b>	
SUSAN'S BATH	
<b>MATERIALS</b>	
MAPLE PLYWOOD INTERIORS	
POPLAR AND MAPLE SOLID WOOD PANEL AND DOOR FRAMES AND MOLDINGS	
MAPLE PLYWOOD AND MOISTURE RESISTANT MEDIUM DENSITY FIBERBOARD (MEDEX) EXTERIORS	
<b>FINISHES</b>	
PAINTED EXTERIORS. COLOR T.B.D. BY DESIGNER'S SPECS OR SAMPLE	
INTERIOR FINISHES T.B.D.	
<b>HARDWARE</b>	
BLUM CLIP TOP INSET BLIND CORNER HINGES 79T9590B	
BLUM TUNDEM PLUS BLUMOTION UNDERMOUNTED DRAWER SLIDES 562H4570B	
<b>SPECIAL NOTES</b>	
PLEASE NOTE THAT HADLES AND/OR PULLS MUST BE SUPPLIED PRIOR TO FABRICATION TO ASSURE PROPER FIT AND INSTALLATION.	
<b>SUBMITTALS</b>	
1.	07/17/2009 FOR APPROVAL
2.	
3.	
4.	
<b>DESIGNER</b>	
<b>CONTRACTOR</b>	
<b>ENGINEERING</b>	
<b>FILE</b>	
Drawn By	
Date	07/17/2009
Job Number	051909-27
Scale	AS NOTED
Page	2.03



5 SECTION MAKE-UP CABINET  
SUZAN'S BATH  
SCALE: 3" = 1'-0"



5 SECTION PULLOUTS  
SUZAN'S BATH  
SCALE: 3" = 1'-0"

JOB NAME	
RESIDENCE	
ALPINE, NJ 07620	
TITLE	
SUZAN'S BATH	
MATERIALS	
MAPLE PLYWOOD INTERIORS	
POPLAR AND MAPLE SOLID WOOD PANEL AND DOOR FRAMES AND MOLDINGS	
MAPLE PLYWOOD AND MOISTURE RESISTANT MEDIUM DENSITY FIBERBOARD (MEDEX) EXTERIORS	
FINISHES	
PAINTED EXTERIORS. COLOR T.B.D. BY DESIGNER'S SPECS OR SAMPLE	
INTERIOR FINISHES T.B.D.	
HARDWARE	
BLUM CLIP TOP INSET BLIND CORNER HINGES 79T9590B	
BLUM TUNDEM PLUS BLUMOTION UNDERMOUNTED DRAWER SLIDES 562H4570B	
SPECIAL NOTES	
PLEASE NOTE THAT HADLES AND/OR PULLS MUST BE SUPPLIED PRIOR TO FABRICATION TO ASSURE PROPER FIT AND INSTALLATION.	
SUBMITTALS	
1. 07/17/2009 FOR APPROVAL	
2.	
3.	
4.	
DESIGNER	
CONTRACTOR	
ENGINEERING	
FILE	
Drawn By	
Date	07/17/2009
Job Number	051909-27
Scale	AS NOTED
Page	2.04